

IrDA-USB 2.0

Infrared Adapter Series

Reference Manual

IrDA-USB 2.0

Infrared adapter Series

Introduction

Thank you to purchasing the **IrDA-USB2.0** wireless Infrared products for your computer .
The **IrDA-USB** product enables computer users to transfer data back and forth to a desktop PC without any cables

Specification

IrDA-USB 2.0

- .Compatible with USB 2.0 specification for high speed operation
- . Meets IrDA v1.0, v1.1 , v1.4, specification
- .USB 1.1 downward compatible
- .Bus-powered , no external power required
- . Transmits and receives data up to 4Mbps
- . Transmission range : 1 cm – 100 cm (3 feet)
- . Connects to a standard PC USB port (P& P)
- .Plug into any downstream USB port and use
- . Windows 98/Me/2000/XP compatible

IrDA-USB 2.0

Plug the flat end of the USB cable (A type) into the USB hub or USB port located in the back of your computer, connect the other end (B type) into the IrDA-USB adapter.

Driver Install For Windows 98

1. Please insert the driver disk, the screen shows ‘**This wizard searches for new drivers for: STIr42XX**’, please click ‘**Next**’ to continue
- 2 The screen shows ‘**What do you want Windows to do?**’, please select ‘**Search for the best driver for your device. (Recommended)**’, then click ‘**Next**’ to continue



3. Screen shows ‘**Windows will search for new driver in its driver database on your hard driver, and in any of the following selected locations.**’ Please select ‘**Specify a location**’ and type ‘**E:\Drv98**’ then click ‘**Next**’ to continue



4. Screen shows **‘Windows Driver file search for the device: SigmaTel USB 2.0 IrDA Brige’**
Please click **‘Next’** to continue
5. Click **‘Finish’**, then Windows has finished installing the device

Driver Install For Windows Me

1. Insert the drive disk and select **‘Specify the location of the driver (Advanced)’**
Please click **‘Next’** to continue



2. The screen shows **‘Windows will search for new drivers in its driver database on your hard drive, and in any of the following selected’**, please select **‘Search for the best driver for your device (Recommended)’** and select **‘Removable Media (Floppy, CD-ROM...),** then select **‘Specify a location’** and type **‘E:\\DrvME’** in the blank



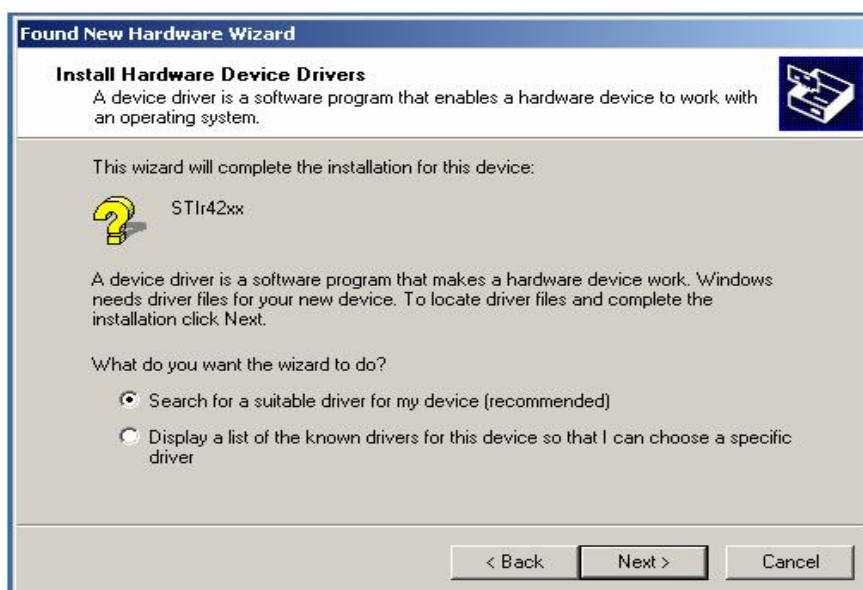
3. Screen shows ‘**Windows has found multiple software package that should work for this device**’, please select
The updated software (Recommended)



4. Click ‘**Finish**’ Windows has finished installing the device.
5. Restart the computer.

Driver Install For Windows 2000

1. Insert the driver disk, the screen shows ‘**Welcome to the Found New Hardware Wizard**’
Please select ‘**Next**’
2. The screen shows ‘**This wizard will complete the installation for this device: STIr42XX**’, please select
‘**Search for a suitable driver for my device (recommended)**’



3. Screen shows ‘**Locate Driver Files, Where do you want Windows to search for driver Files?**’ Please select ‘**Specify a location**’
3. Click”**Next**”



5. Screen shows “**insert the manufacture’s installation disk into their drive selected, and then click OK**” please type . “**E:\Drv2k**”
6. Click “**OK**”



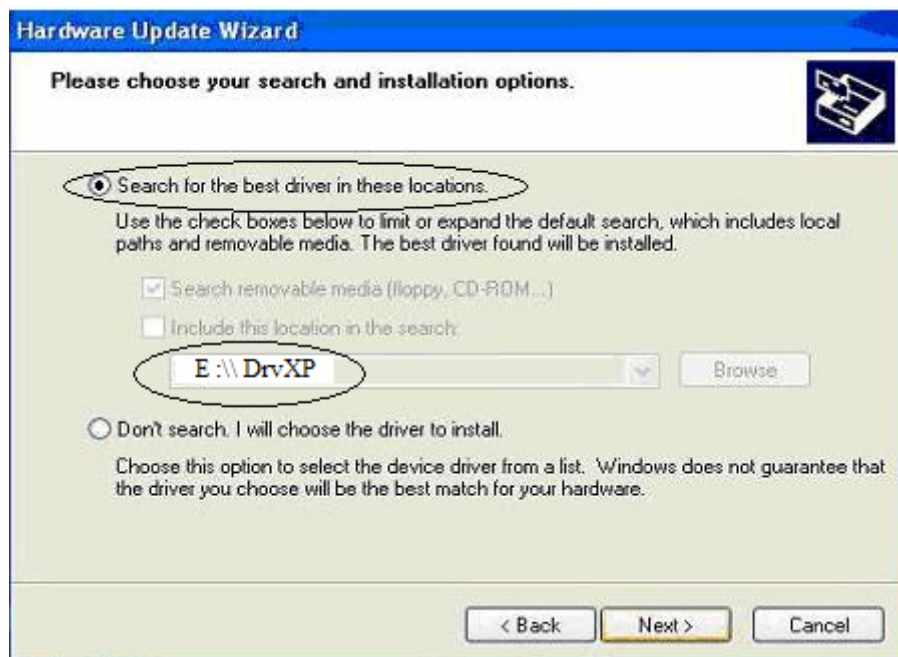
7. Click “**Next**”
8. click “**Finish**” windows has finished installation of the device

Driver Install For Windows XP

1. The Hardware Update Wizard is starting. Select **“Install from a list or specific location (Advanced)”**. Please insert the driver disk and then click **“Next”** to continue.



2. The screen shows **“Please choose your search & installation option”**. Please select **“Search for the best driver in these locations .”**
3. Please type **“E:\DrvXP”** Then, please click **“Next”** to Continue.



4. There is a warning wizard is going to show up. Please choose “**Continue Anyway**”.



5. Please click “**finish**”, then the XP has finished installing the device.

Note:

1. If users unplug and plug into a different USB port, the system will detect it as "**SigmaTel USB 2.0 IrDA Bridge**". This is a feature of Windows 2000 and Windows XP - users must install the driver on each USB port that he or she will use the device on
2. Setup Transceiver type for different cell phone type .

All indicated copyrights and trademarks are the property of their respective